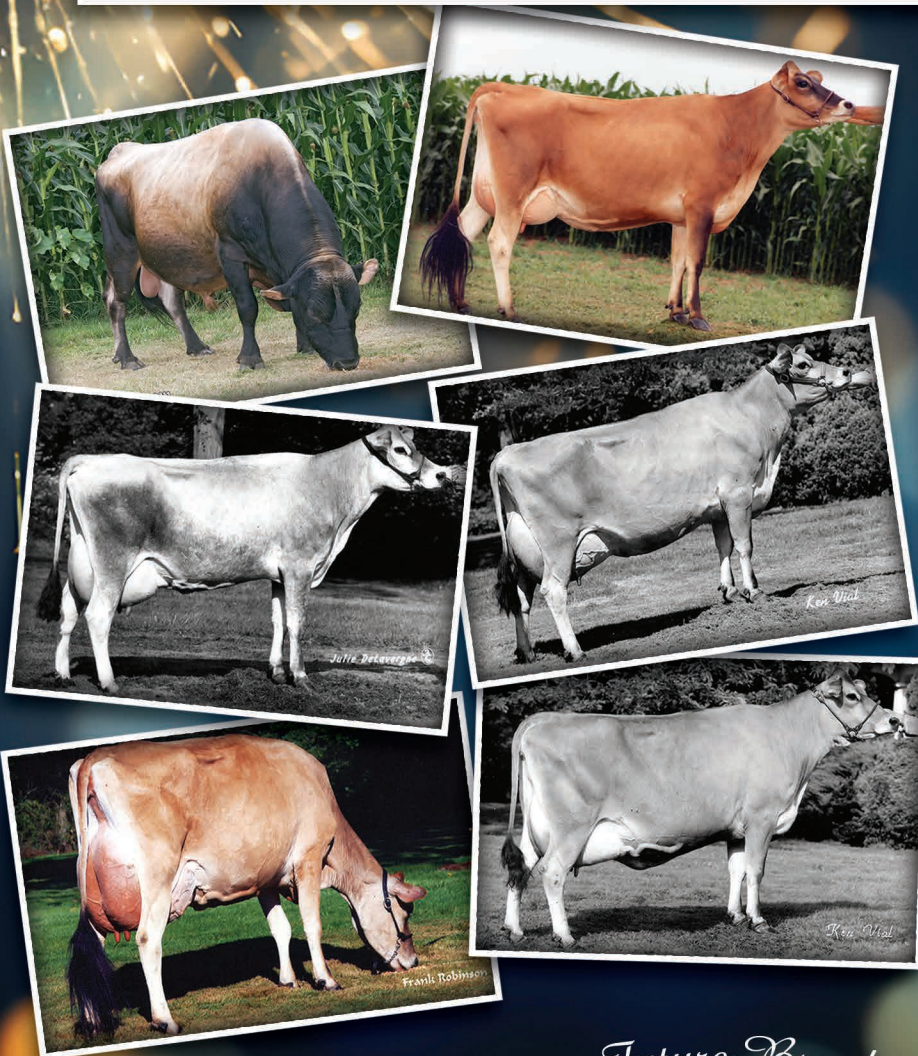


2025 Happy New Year

We appreciate all that have supported Forest Glen Genetics over the years. It's always exciting to see our genetics excel in other herds coast-to-coast.

We look forward to the new year and great things to come. Here's a look back at some of the "special ones" we've had the privilege to work with.



Top left clockwise:

7JE590 Forest Glen Avery Action-ET
24,145 daughters in 2,885 herds
(CDCB: GPTA 12/24)

Mt View American Kelli, E-90%
Two records over 27,000M

Forest Glen Magic Dede, E-91%,
records up to 24,400M

Forest Glen Legend Maria, VG-88%,
Sold to Comfort Hill Jarsey Farm, VT at
the 1985 All American Sale, she is the
great-grandam of MONTANA and
MANNIX

Havs Chief Berretta Jade, E-95%
We purchased her in 1991 and proved to
be a valuable investment with 60
registered prodgeny (35 females and 25
sons). She was a finalist in the 2015
Great Cow Contest

Foret Glen Malcolm Gemini-ET, E-90%
Two records over 22,000M

*These are just a few of the
foundation animals that our
herd is built on. The genetics
continue to carry through each
generation and the future
remains bright!*

Building our Future Breeding Program!



Dan Bansen
503/472-6342 (Phone)
Dan.Bansen@gmail.com



5801 S.E. Bansen Lane, Dayton, OR 97114



Jamie Bansen
971/237-4164
jbsansen@gmail.com