



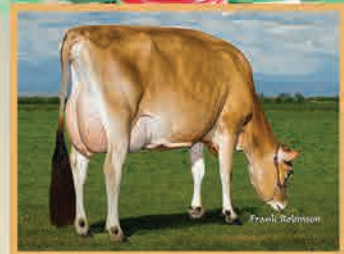
# NATIONAL HEIFER SALE

June 26, 2025 • 6:30 p.m. (EDT)

Embassy Suites-UK Coldstream • Lexington, Kentucky  
Virtual sale broadcast live via Cowbuyer.com

## SUPPORTING JERSEY YOUTH PROGRAMS

High Genomics • Transmitting Maternal Lines • Fancy Show Type



### Dupat Critic 406-P-ET, E-92%

9 lact. avg. 20,416M, 1,077F, 784P ME  
Offering IVF rights to the #42  
JPI female of the breed at  
+185GJPI and +3.0DPR. "Critic  
406-P" is her great-grandam.  
Wickstrom Jersey Farms, CA



### Dodan Lemonhead Tureen, E-91%

2-1 305 26,640 4.5% 1,196 3.4% 904  
From the same maternal line  
sells a JX CRISPIN {5} GJPI +171  
GJPI. The dam is a JX BETTIS  
{5} followed by a VG-85% ZINC  
with over 24,000M and 1,400F.  
D & D Jerseys, WI



### TLJ Hendrix Hilife, E-90%

5-10 297 19,250 4.7% 902 3.6% 692  
Offering a JX CRISPIN {5} GJPI  
+167 with all proceeds going  
toward AJCA youth programs.  
The dam is a SUGAR DADDY  
followed by a JX CHIEF {6}. Hilife  
is the fourth dam. *Select Sires &  
Jerseyland Sires, OH*



### JX Dutch Hollow Cordoba Madam {6}-ET

1-10 147DIM 10,468M RIP  
Her JX SLAM {6} daughter sells  
with +20.6 GJUI and +155 GJPI.  
The grandam is a VG-88%  
JX CHIEF {6} from our  
"Lester Mischief-P" family.  
Melanie Chittenden, NY



### Goff Pharoah Circus Act, E-90%

7-4 305 27,290 4.5% 1,216 3.2% 862  
Selling a JX INXS {6} with +23.6  
GJUI. The dam is sired by  
LASPADE followed by an E-91%  
JX CHIEF {6}. "Circus Act" is the  
fourth dam. *Sunnyside Farm, NY*



### Milo Vindication Season-ET, E-94%

All-Canadian Mature Cow, 2012  
Her October 2024 NUANCE  
granddaughter sells. The  
dam is an E-94% TEQUILA.  
Joseph Allen, VT



### Vierra If I May-ET, E-91%

Junior All American  
Milking Yearling, 2023  
Her March DREAM-MAKER  
daughter sells. The grandam  
is Morningmist Joel Iveena,  
E-94%. *Bryce Johnston, NC*



### Pleasant Nook Tequila Daiquiri, SUP-EX 96-3E CAN

All-Can. Lifetime Component, 2024  
Her September 2024 Gigawatt  
granddaughter sells. The dam  
is sired by JOEL. *Kira Wetmore, NC*



### Elliotts Vivid Deluxe, E-95%

2nd 5-Yr-Old, 2011 Mid-Atlantic Regional  
Her December 2024 VIDEO  
granddaughter sells. The dam  
is an E-93% PREMIER and the  
third dam is "Golden Vista,"  
E-95% followed by "Veronica,"  
E-97%. *Ryan Krull, IA*



### Brickton Jade Sea Breeze, VG-88%

Selling a May 2024 BIG RED  
out of an E-90% JOYRIDE. The  
grandam is a VINDICATION  
then an E-90% PREMIER.  
"Sea Breeze" is the fourth dam.  
*Kristin Reiman and Summer  
Schepper, MN*



### Homeridge T Annette, E-94%

National Jersey Jug  
Futurity Winner, 2022  
A June 2024 CHOCOCHIP  
sells. The dam is a VG-85%  
VICTORIOUS followed by  
"Annette." *Ava, Ivy and Liv  
Hebgen, WI*



### Lawtons Galvanize Ernie, E-93%

8-10 305 31,790 5.0% 1,596 3.5% 1,108  
Her July 2023 BANCROFT  
granddaughter sells. The dam  
is a VG-86% MEGAPOWER.  
"Ernie" is backed back an E-90%  
"Louie" with over 28,000M.  
*Merle and Timothy Lawton, NY*



### Humming BT Finalist Dottie, E-94%

1st Mature Cow, 2018 Royal Winter Fair  
Offering her December 2024  
COMERICA daughter. Also  
embryos sired by VIDEO out of  
"Dottie" sell. The next two dams  
are Excellent. *Maci and Camryn  
Crothers, NY*



### Family Hill Tequila Night, E-93%

2nd Milking Yearling,  
2017 World Dairy Expo  
Selling a choice between two  
September CANADIAN CLUB  
calves. The dam is an E-90%  
VICTORIOUS followed by  
"Night." An E-95% "Minister" is  
the third dam backed by two  
more Excellent dams.  
*Gabie Gregoria, CA*



### Big Guns Jamaica Vanilla, E-95%

Grand Champion, 2012 International  
Junior Jersey Show  
Look for her December JOEL  
granddaughter to sell. The  
dam is an E-91% COLTON.  
*Dr. Katherine Knowlton, VA*



### Llilyn Jude Griffen-ET, E-95%

2x National Grand Champion  
A June 2024 REMBRANDT out  
of a VG-87% FERDINAND sells.  
The next dam is a VG-88% VIP,  
then a VG-87% COLTON,  
E-90% TEQUILA and the fifth  
dam is "Griffen." *Jacob, Colton  
and Kyle Sauber, MN*

Look for this September JX CHATHAM {4} with +20.6 GJUI and +175 GJPI. The dam is a VG-88% JX GO ON {4} followed by a VG-88% JX STONEY {3} both have above 5.8% fat and 3.7% protein. *Travis Lehnertz, MN*

Selling an August 2024 ALTAMALACHI with positive production numbers, +1.3 DPR, +16.8 GJUI and +174 GJPI. The dam is a VG-85% GISLEV with 18,990M and 1,112F actual at 1-10. *Ahlem Farms Partnership, CA*

Offering an IVF opportunity with an JX ALTAFOREFRONT {5} that is +173 GJPI. Her dam is a VG-83% GEPPETTO {6} followed by a VG-85% JX CHIEF {6} with over 24,000M and 1,300F actual. *Legacy Ranch, CA*



Broadcast live with real time bidding on  
**CowBuyer.com**

**JMS**

**Jersey Marketing Service**

6486 E. Main Street, Reynoldsburg, OH 43068  
614.861.3636 614.322.4496 fax  
JMS@USJersey.com | http://JMS.USJersey.com



Here is your chance to IVF the #4 GJPI female of the breed! She is a JX THRASHER {6} daughter with +194 GJPI. The dam is a VG-85% JX CIRCLE {5} followed by an E-91% PINE with two records over 21,000M and 1,000F. *Kash-In Jerseys, CA*

Check out this November calf with a +183 GJPI and ranks 56th in the breed. She is sired by JX ALTAFAVARA {6} and out of a KESTREL-P dam. *Peak Genetics, WI*

JX Victory 60881 Chatham 70465 {5}, ranks among the top 100 females for JPI at +180 GJPI and sells. Her dam is JX THRASHER {6} backed by a CRAZE. *Victory Farms LLC, SD*

A December JX CLOONEY {6} sells with +179 GJPI. Her dam is an Excellent JX THRASHER {6} with over 18,000M actual. *The Dairy Inc., CA*

Selling a February JX CHATHAM {4} with +1.4DPR, +16.0 GJUI and +175 GJPI. Her dam is a VG-82% NICKLAUS followed by a VG-81% PATRON with high components. *Tommy Allen, WI*

Offering a March JX STROUD {6} with positive production and DPR coupled with +15.2 GJUI and +175 GJPI. The dam is a VG-82% BLIZZARD then a Very Good JX CHIEF {6}. *Rock Bottom Dairy, IA*

An IVF session is offered with this BLIZZARD daughter that is +16.1 GJUI and +168 GJPI. Her dam is a VG-82% JX THRASHER {6} then a JX STORMCLOUD {4} with over 21,000M. *Grant Ahlem, CA*

Check out this January JX GIDDYUP {6} that is +1,296M and +163 GJPI. The dam is a Very Good JX CHIEF {6} then a Very Good JX GOT JIGGY {6}. *Martin Dairy LLC, OR*

Selling a February 2024 MICHIGAN heifer out of an E-90% JX CHIEF {6} with over 26,000M and 1,300F. The grandam is an E-90% PILGRIM. *Albright Jerseys LLC, OH*

Offering a November JX CHATHAM {4} with +18.5 GJUI and +160 GJPI. The dam is a VG-81% HORUS backed by a VG-87% JX THRASHER {6} with two records over 20,000M and 1,000F. *C & S Livestock, CA*

Other consignors include: Bohnert Jerseys, IL; Matos Dairy, CA; Ohio State University, OH; Van De Jerseys, PA; Kunde Jerseys, IA; C/Bar & Al Top, KY and Kerry Gawalt, VT

For more information contact:

Neal Smith, Executive Secretary 209.988.0601  
Kristin Paul, Director of Field Services 209.402.5679  
Scott Holcomb, District 1 Manager 614.563.3227