

CHEER FOR AN *ENCORE* at the All American

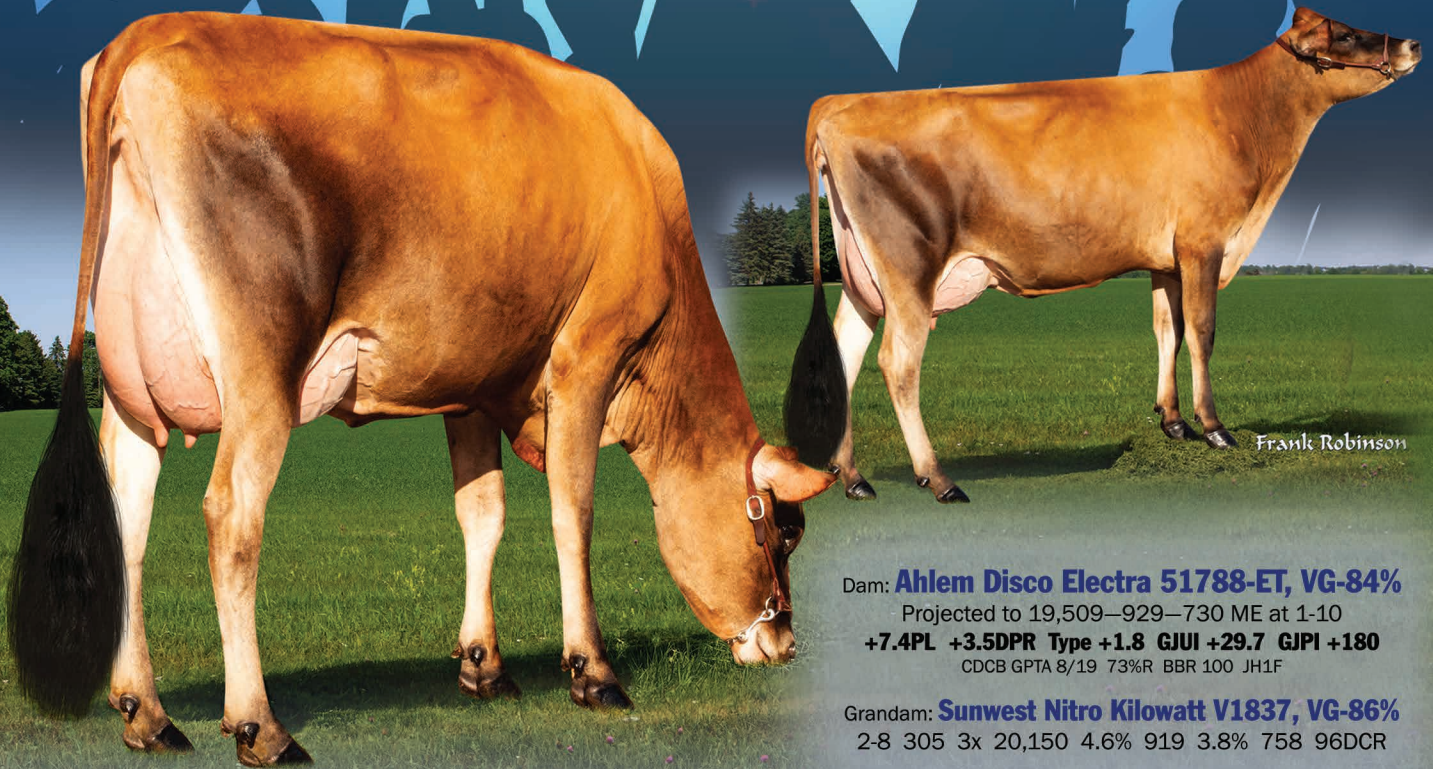


Ahlem Kiawa ENCORE 24617-ET
A2A2 +1,189M +\$619CM +7.2PL +1.2DPR
+2.83SCS Type +1.6 GJUI +28.0 GJPI +196
CDCB: GPTA S 9/19 71%R BBR 100 JH1F
JX KIAWA (6)-P x DISCO x NITRO x KILOWATT x ACADEMY



YOUR SUCCESS *Our Passion.*

ENCORE will be syndicated at the All American. Only 50 shares available at \$1,500 a piece which includes 40 units. Half shares are available at \$800 with 20 units. He will be sampled by Select Sires.



Frank Robinson

Dam: **Ahlem Disco Electra 51788-ET, VG-84%**
Projected to 19,509-929-730 ME at 1-10
+7.4PL +3.5DPR Type +1.8 GJUI +29.7 GJPI +180
CDCB GPTA 8/19 73%R BBR 100 JH1F

Grandam: **Sunwest Nitro Kilowatt V1837, VG-86%**
2-8 305 3x 20,150 4.6% 919 3.8% 758 96DCR

*To purchase your share
contact a JMS staff member:*

Greg Lavan, Manager 614.216.8838
Kristin Paul, Area Representative 209.402.5679
Ron Mosser, Area Representative 614.264.0142



William and Carolyn Ahlem and Sabino Ahlem Herrera, DVM
24093 American Avenue, Hilmar, California 95324
Phone 209/632-5822 Fax 209/632-0242 Email ahlemfarms@aol.com

