

LAZER is on POINT

JX Hawarden Herm Lazer 24950 {5}-PP

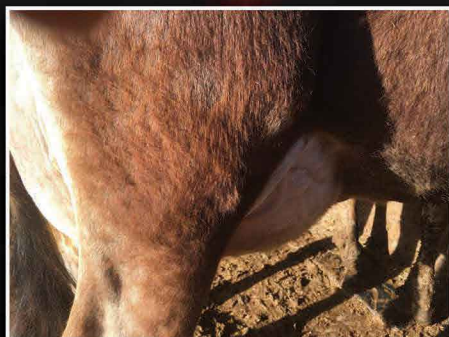
0.16%F +64F 0.10% +44P +\$521CM GJPI +118

CDCB: GPTA S 7/20 BBR 100 JH1F

- #1 PP bull in the breed
- Only PP bull over 500CM\$
- Highest PP bull for CFP

Sire: JX Hawarden R Herm {4}-P (JX RONALDINHO {3} x Hawarden Titanium Hope-P, E-91%)

◀ Dam sired by JX Generations Tradition {5}-P



Fourth Dam: **Ahlem TBone Lady 31879, VG-88%**

5-10 305 3x 23,220 5.0% 1,172 3.9% 901 95DCR

5 lactations average 21,585—1,092—860 ME

Grandam: **Ahlem Nikon Lady 45184-P, E-90%**

4-2 303 3x 19,240 5.4% 1,039 4.0% 777 96DCR

3 lactations average 19,720—1,067—790 ME

The third dam is a VG-88% MARVEL. The fifth thru seventh dams are all Very Good and sired by LEXINGTON, LEGION, PARAMOUNT and JED.

LAZER-PP will sell by competitive bidding in the Polled Power Sale August 18-21 on Jerseybid.com. A syndicate is being formed to purchase him; a full share is \$1,200 and a half share is \$700. Semex is the syndicate partner. Interested parties contact your area representative or Greg Lavan at 614.216.8838.



JMS

Jersey Marketing Service

6486 E. Main Street, Reynoldsburg, OH 43068

614.322.4473 Hannah Meller 614.322.4496 fax

JMS@USJersey.com | <http://JMS.USJersey.com>

USJersey

LAZER-PP was bred by Hawarden Jerseys Inc., ID, and being consigned by Ahlem Farms Partnership, CA.

JOIN IN TODAY!

Greg Lavan, Manager 614.216.8838